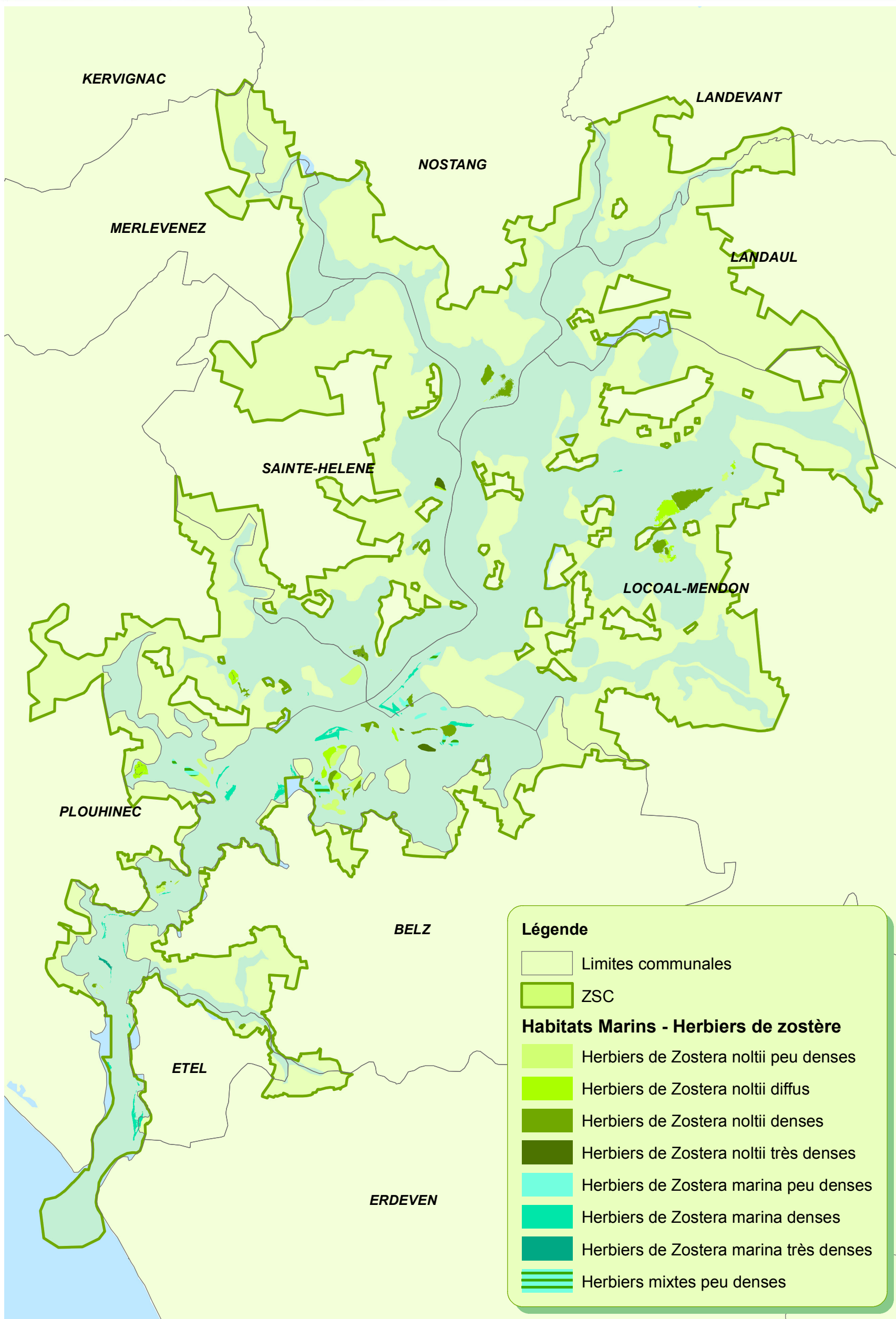
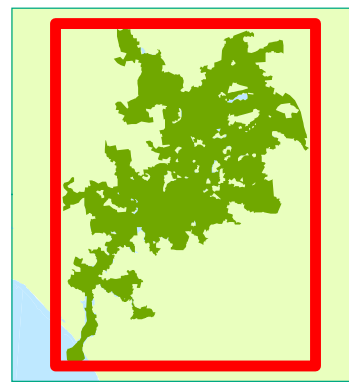
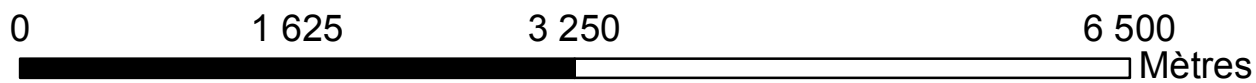


# ► Herbiers de zostères

Ensemble du site N2000



## Légende

Limites communales

ZSC

### Habitats Marins - Herbiers de zostère

Herbiers de Zostera noltii peu denses

Herbiers de Zostera noltii diffus

Herbiers de Zostera noltii denses

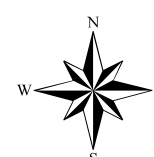
Herbiers de Zostera noltii très denses

Herbiers de Zostera marina peu denses

Herbiers de Zostera marina denses

Herbiers de Zostera marina très denses

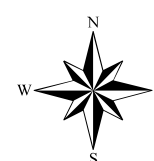
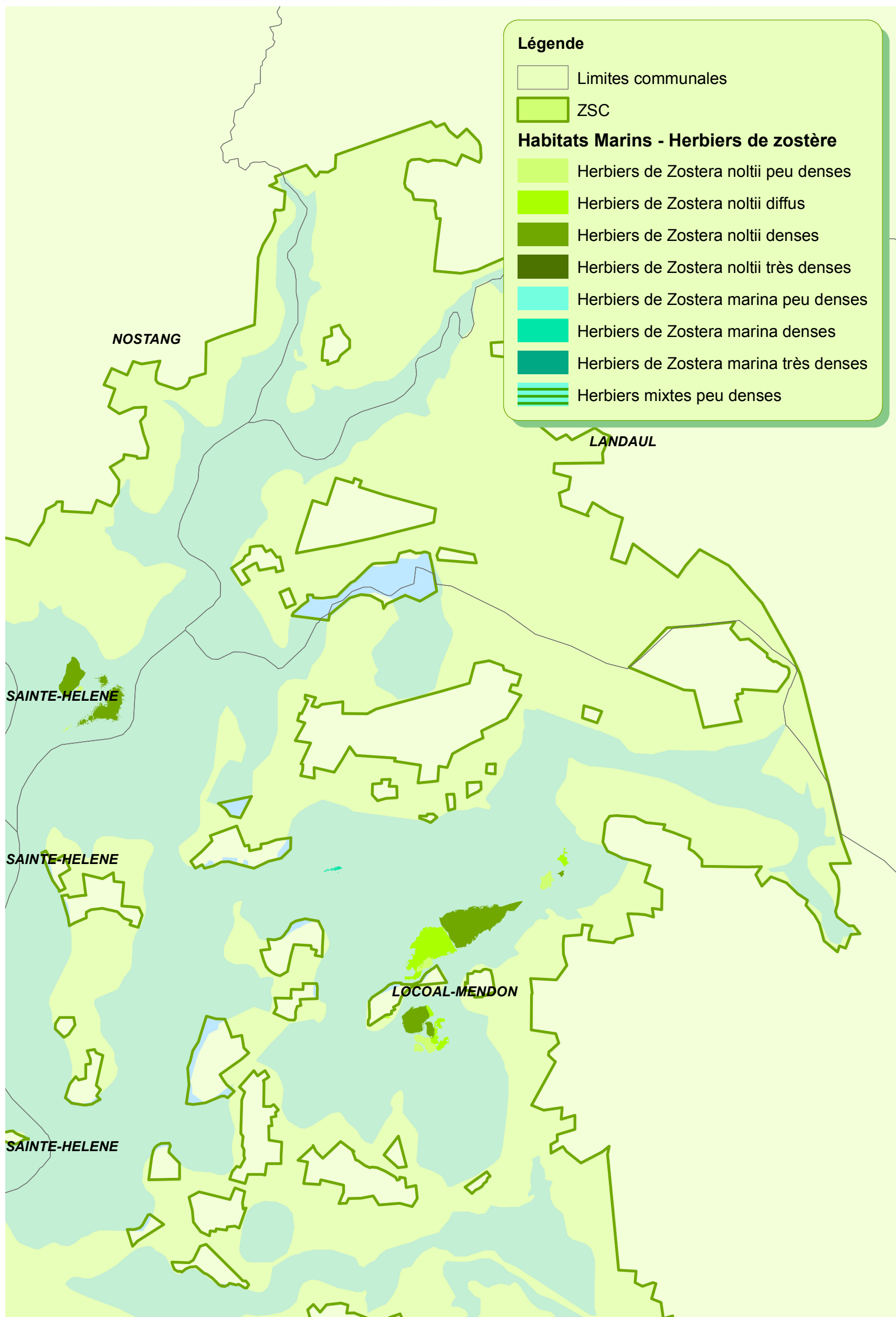
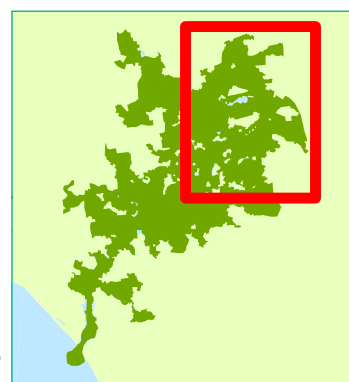
Herbiers mixtes peu denses



# ► Herbiers de zostères

Nord-est du site N2000

0 850 1 700 3 400 Mètres

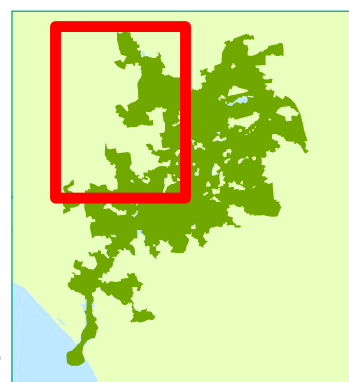


Sources : Syndicat Mixte de la Ria d'Etel, DREAL, CBNB

# ► Herbiers de zostères

Nord-ouest du site N2000

0 850 1 700 3 400 Mètres



## Légende

Limites communales

ZSC

### Habitats Marins - Herbiers de zostère

Herbiers de Zostera noltii peu denses

Herbiers de Zostera noltii diffus

Herbiers de Zostera noltii denses

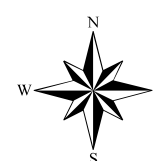
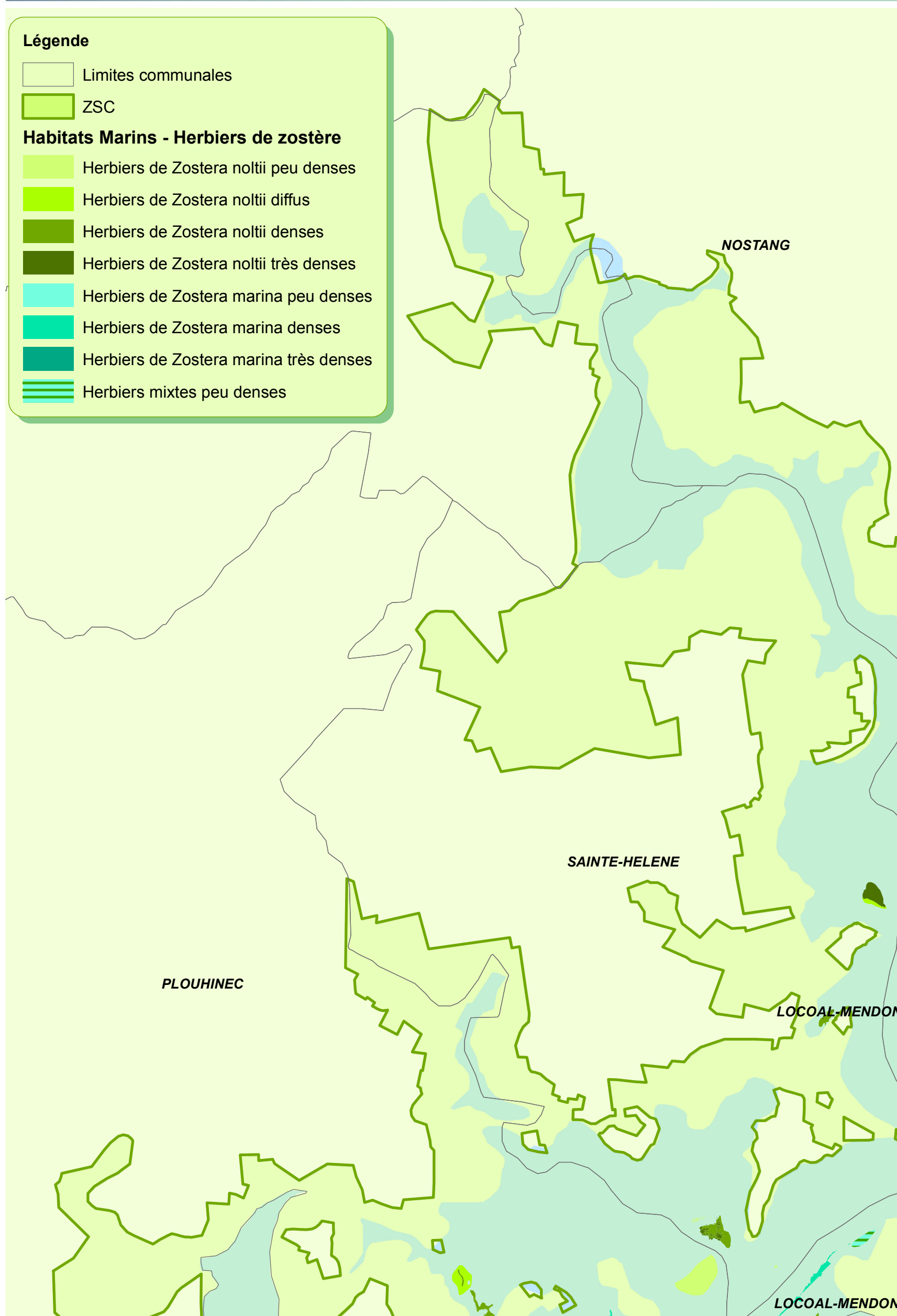
Herbiers de Zostera noltii très denses

Herbiers de Zostera marina peu denses

Herbiers de Zostera marina denses

Herbiers de Zostera marina très denses

Herbiers mixtes peu denses



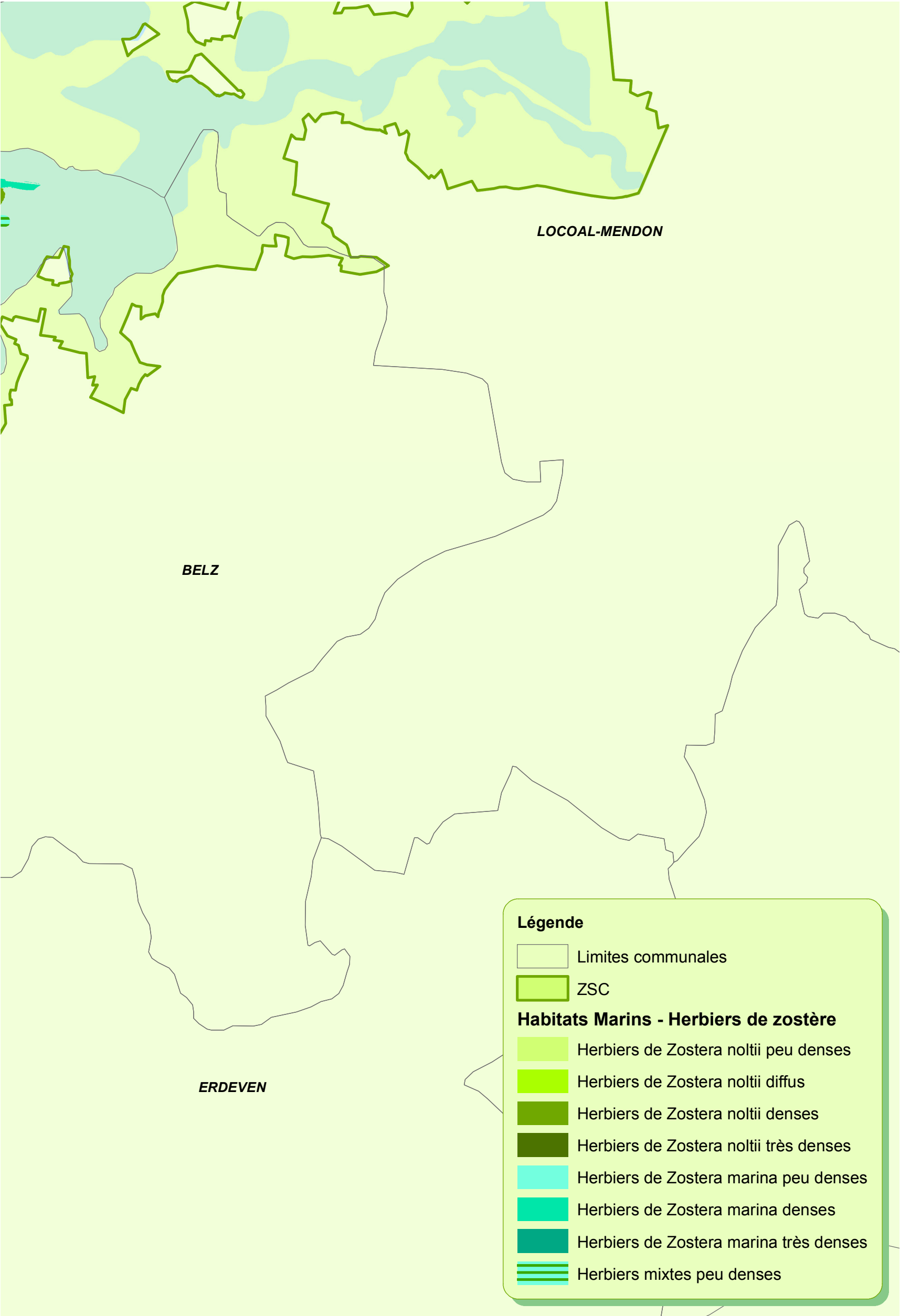
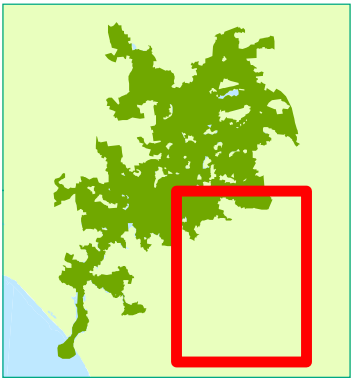
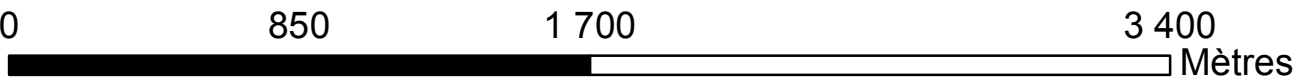
Sources : Syndicat Mixte de la Ria d'Etel, DREAL, CBNB

DOCUMENT D'OBJECTIFS NATURA 2000

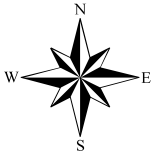


# ► Herbiers de zostères

Sud-est du site N2000



DOCUMENT D'OBJECTIFS NATURA 2000

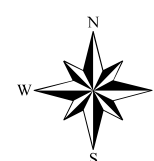
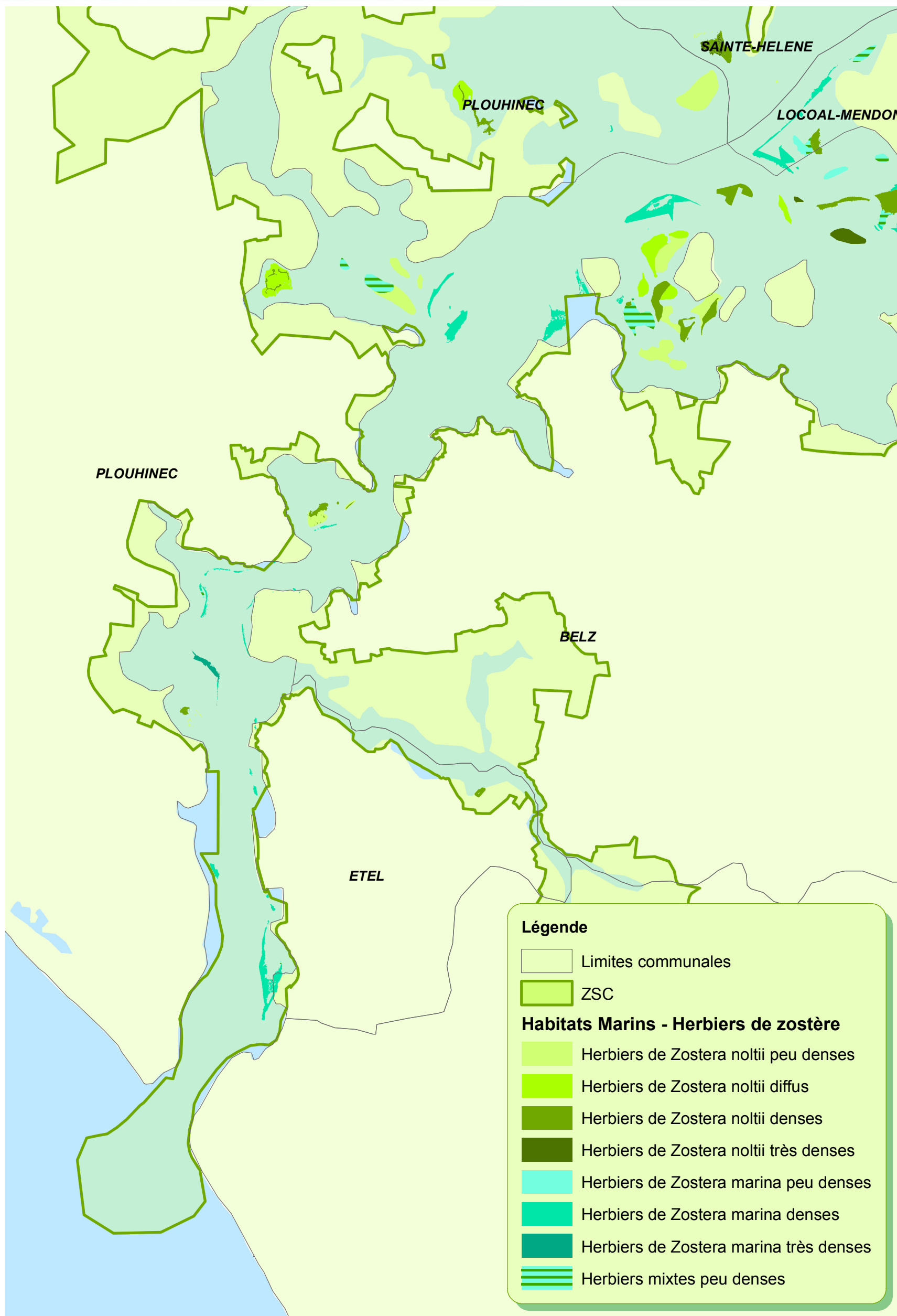
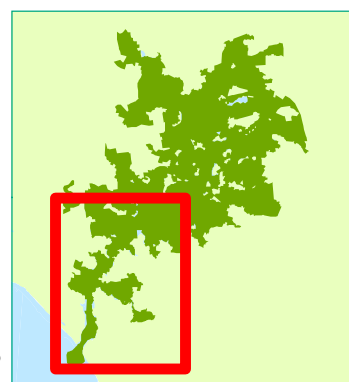




# ► Herbiers de zostères

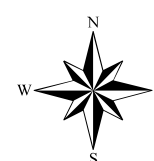
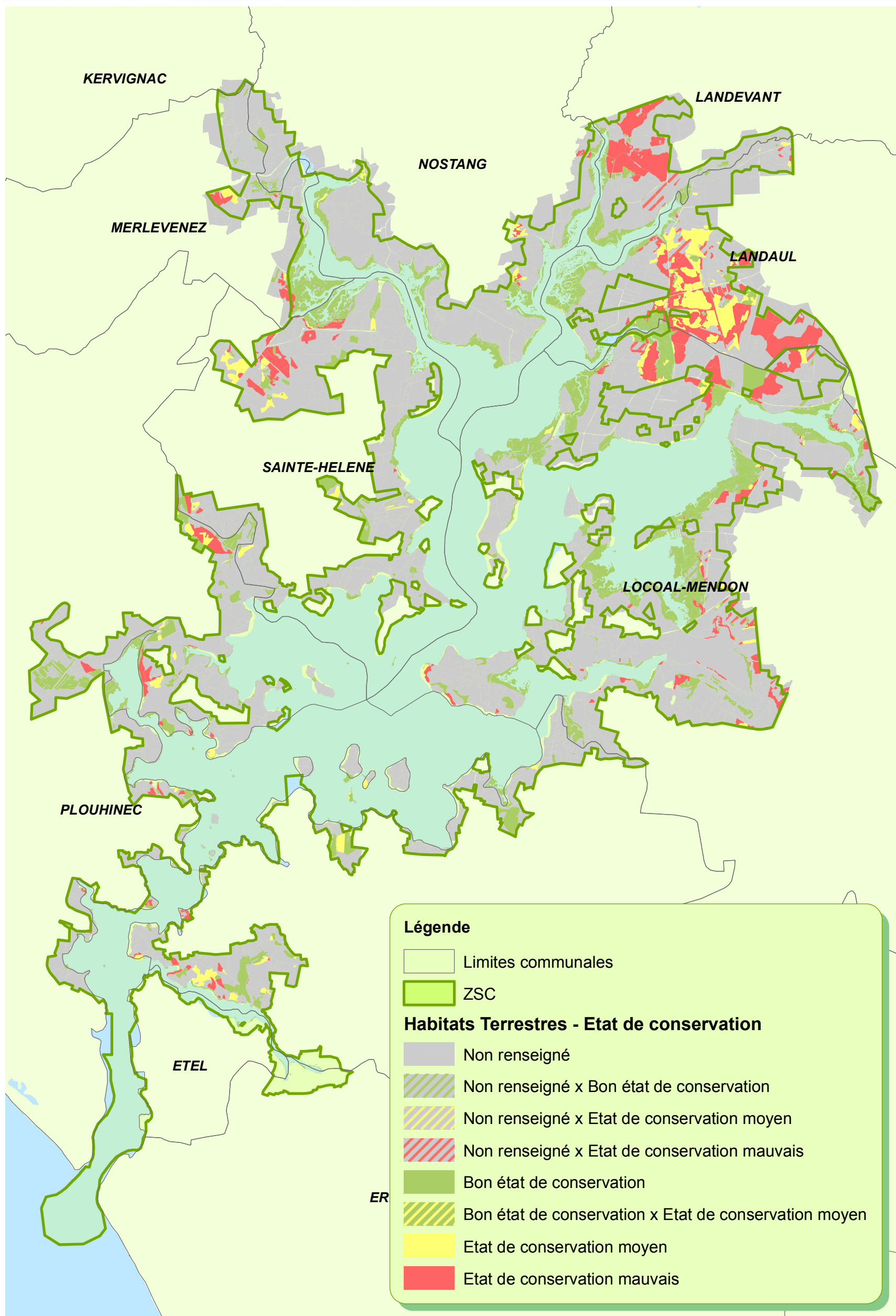
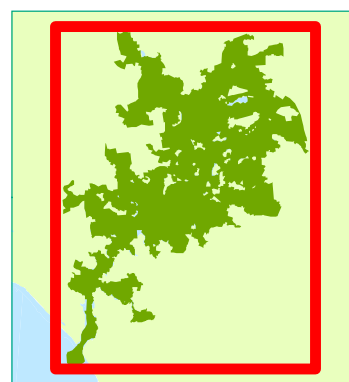
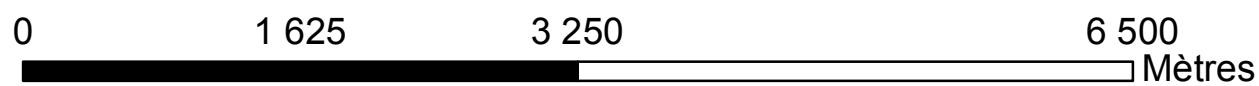
Sud-ouest du site N2000

0 850 1 700 3 400 Mètres



# ► Etat de conservation

Ensemble du site N2000

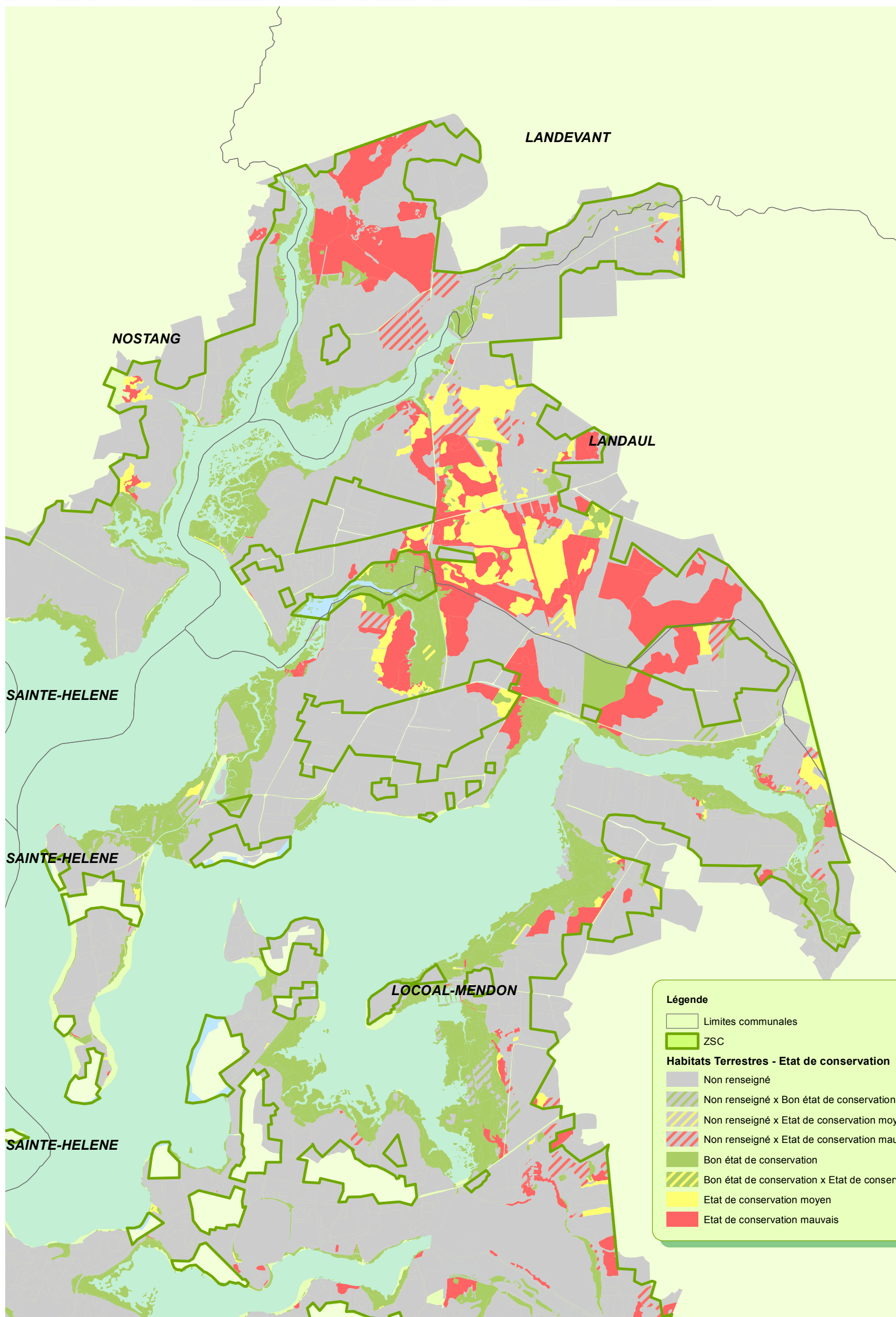
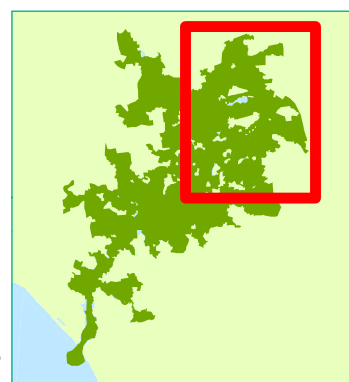




# ► Etat de conservation

Nord-est du site N2000

0 850 1 700 3 400 Mètres



**Légende**

- Limites communales
- ZSC

**Habitats Terrestres - Etat de conservation**

- Non renseigné
- Non renseigné x Bon état de conservation
- Non renseigné x Etat de conservation moyen
- Non renseigné x Etat de conservation mauvais
- Bon état de conservation
- Bon état de conservation x Etat de conservation moyen
- Etat de conservation moyen
- Etat de conservation mauvais



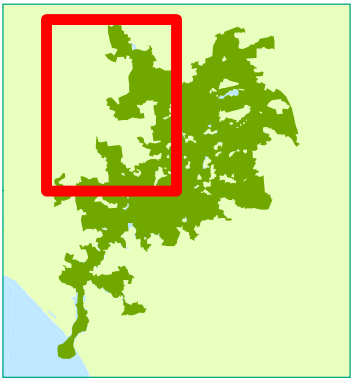
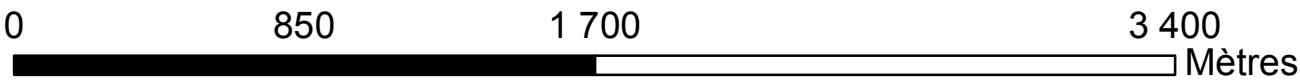
Sources : Syndicat Mixte de la Ria d'Etel, DREAL, CBNB

DOCUMENT D'OBJECTIFS NATURA 2000

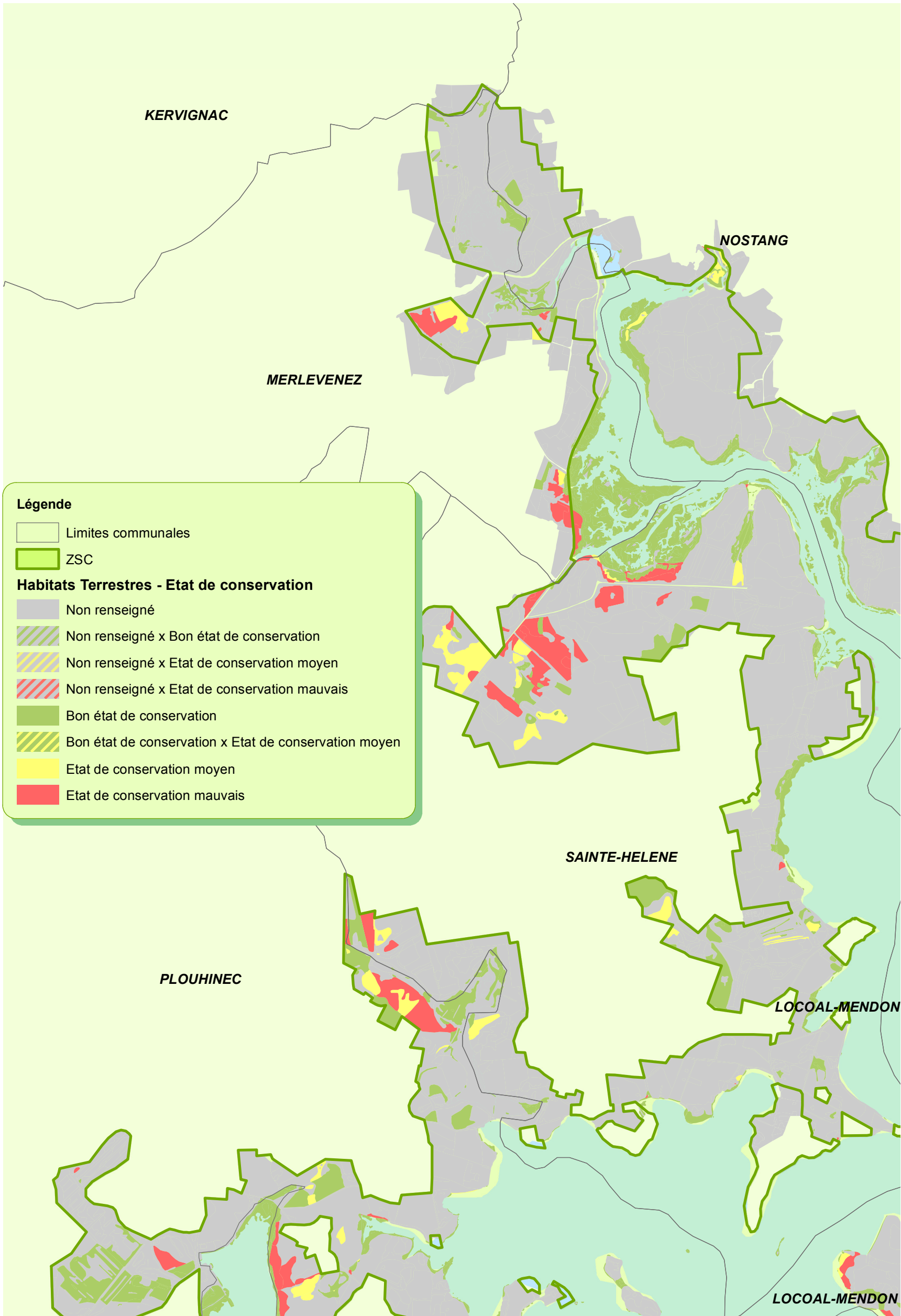


► **Etat de conservation**

Nord-ouest du site N2000

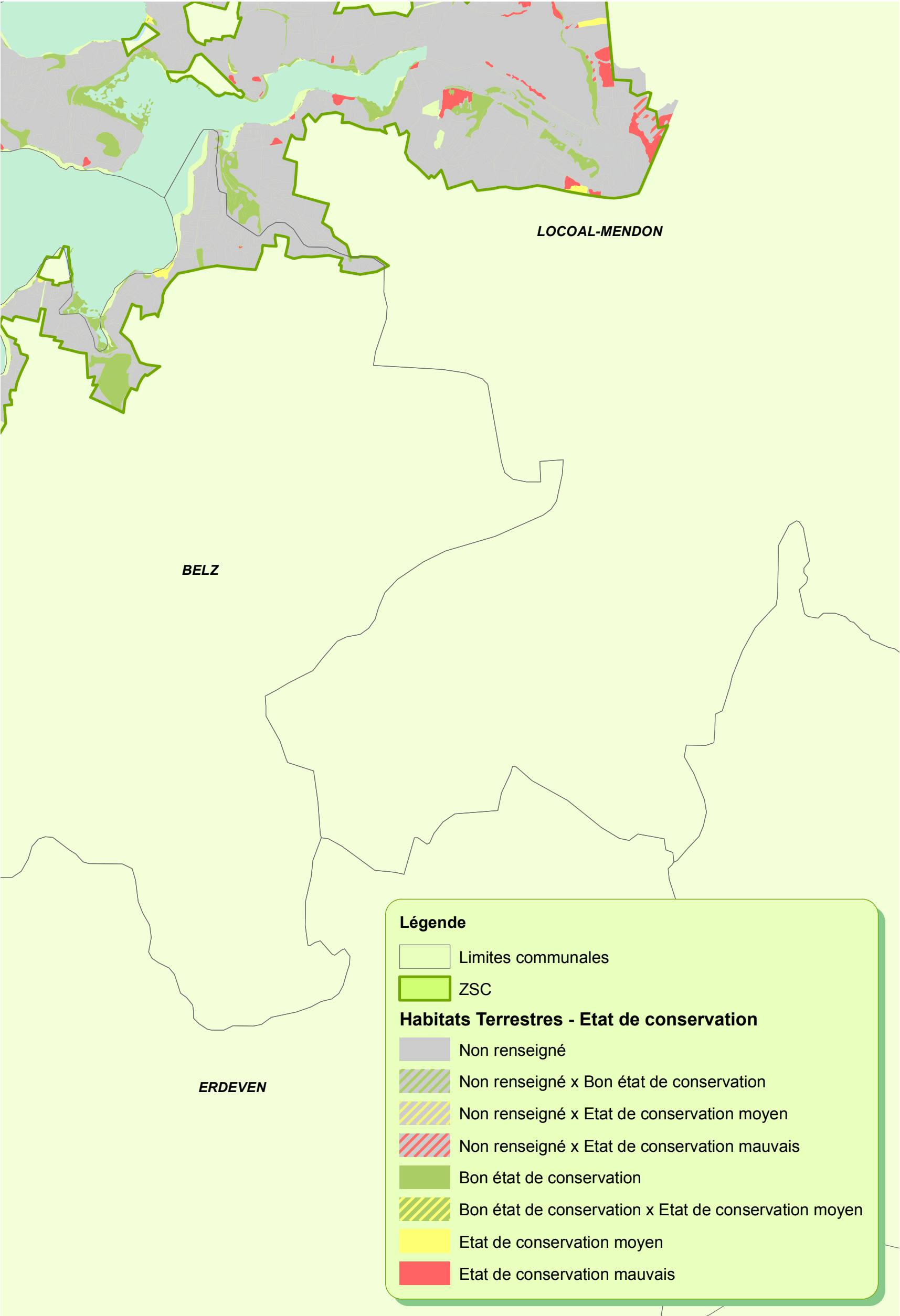
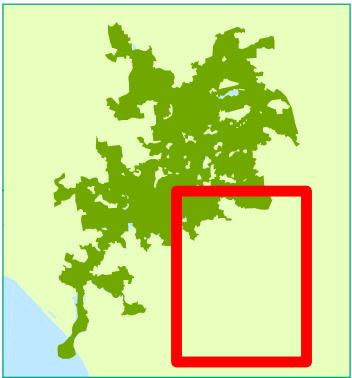
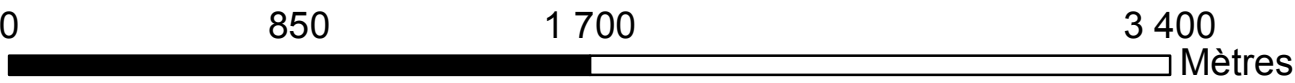


DOCUMENT D'OBJECTIFS NATURA 2000

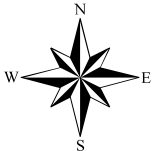


► **Etat de conservation**

Sud-est du site N2000



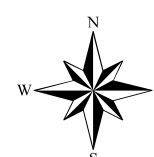
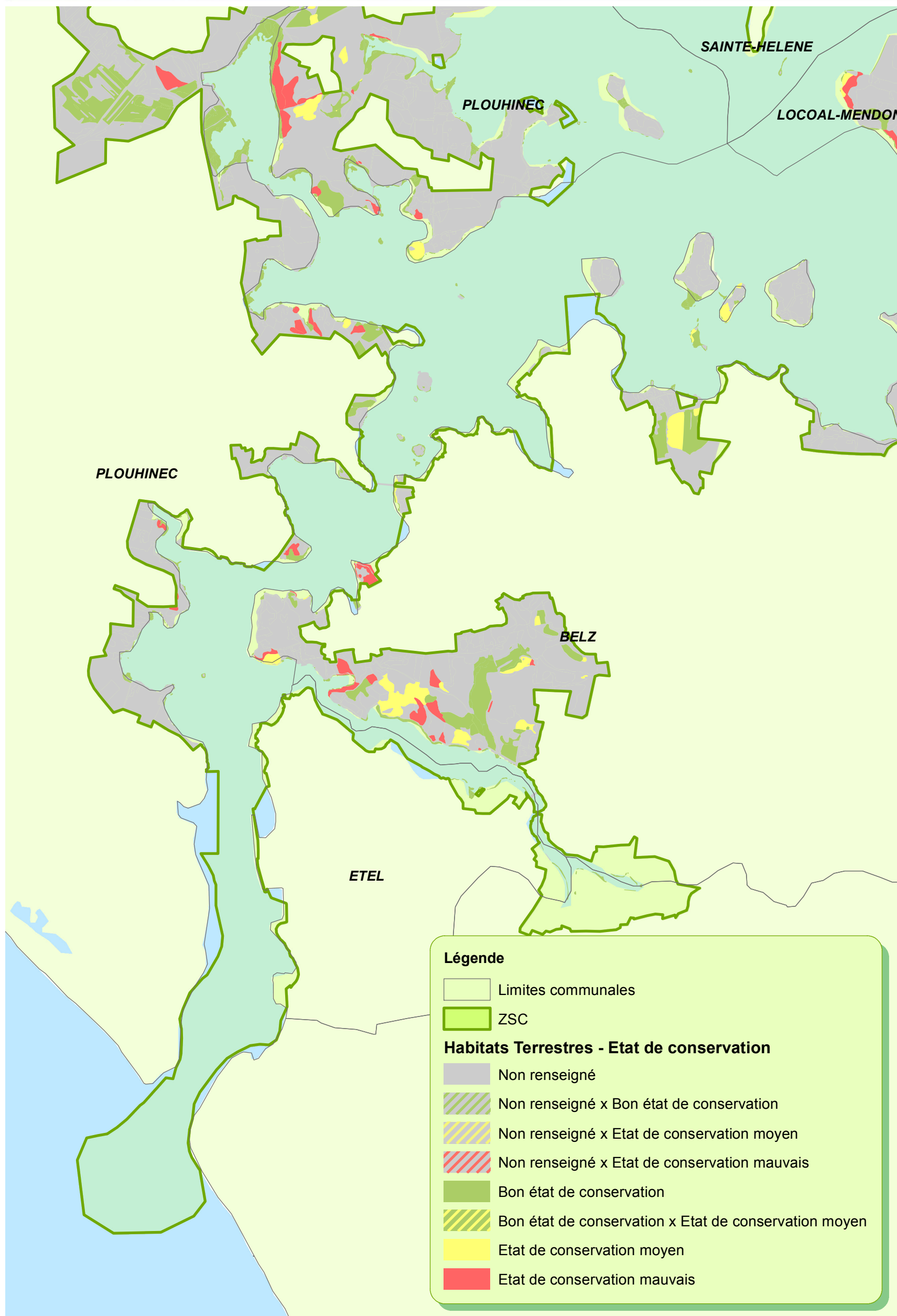
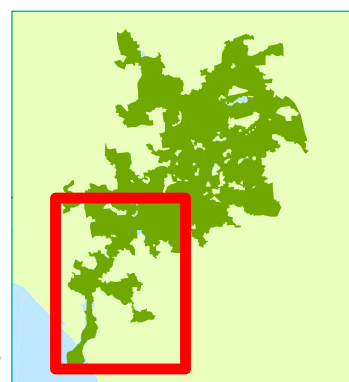
DOCUMENT D'OBJECTIFS NATURA 2000



# ► Etat de conservation

Sud-ouest du site N2000

0 850 1 700 3 400 Mètres



Sources : Syndicat Mixte de la Ria d'Etel, DREAL, CBNB

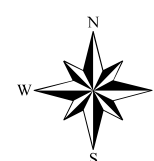
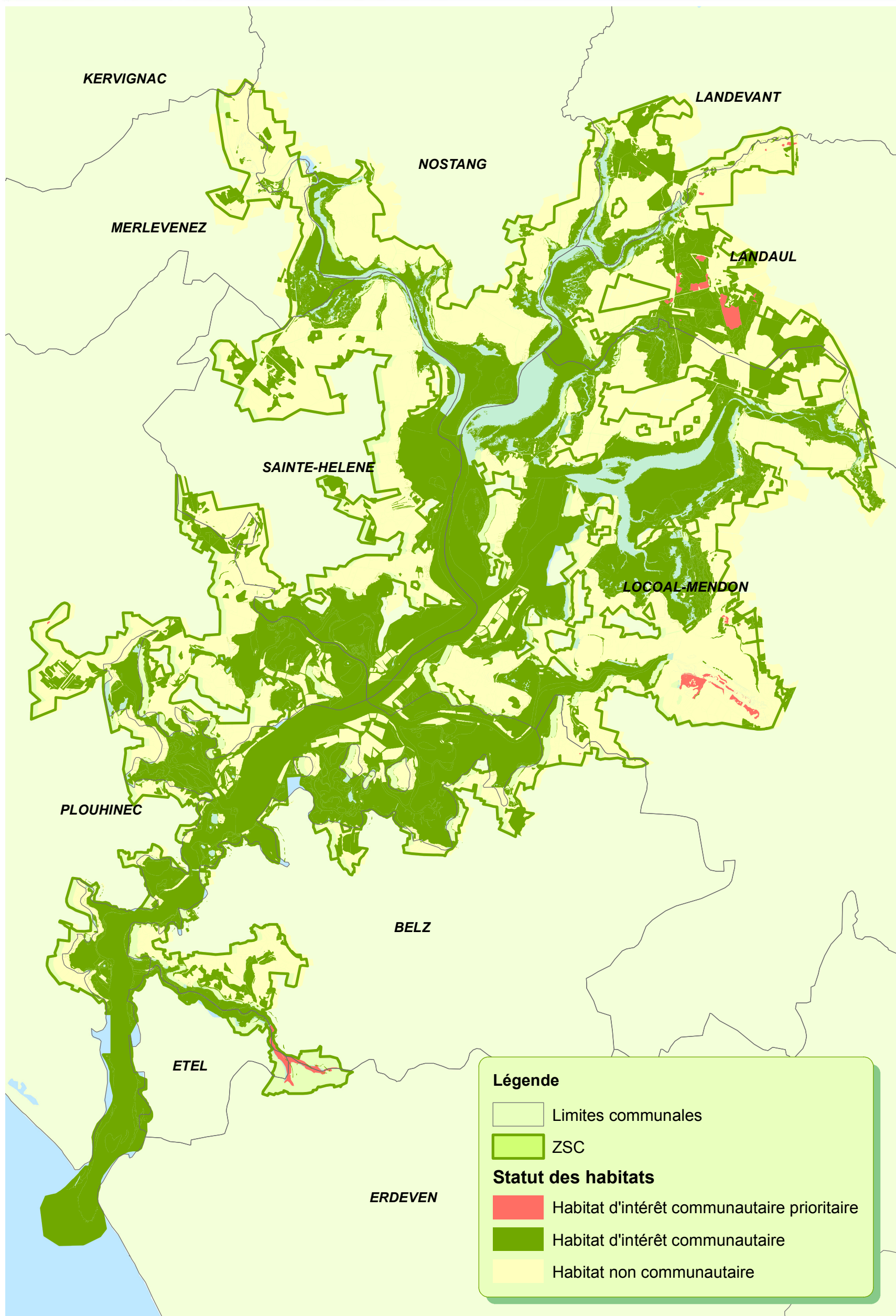
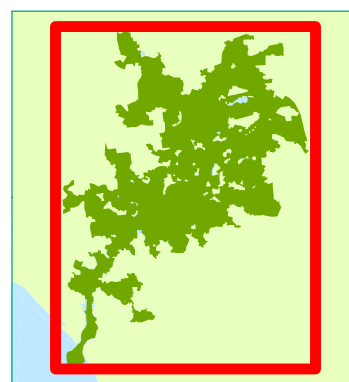
DOCUMENT D'OBJECTIFS NATURA 2000



# ► Statuts des habitats

Ensemble du site N2000

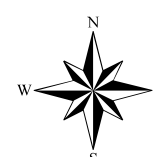
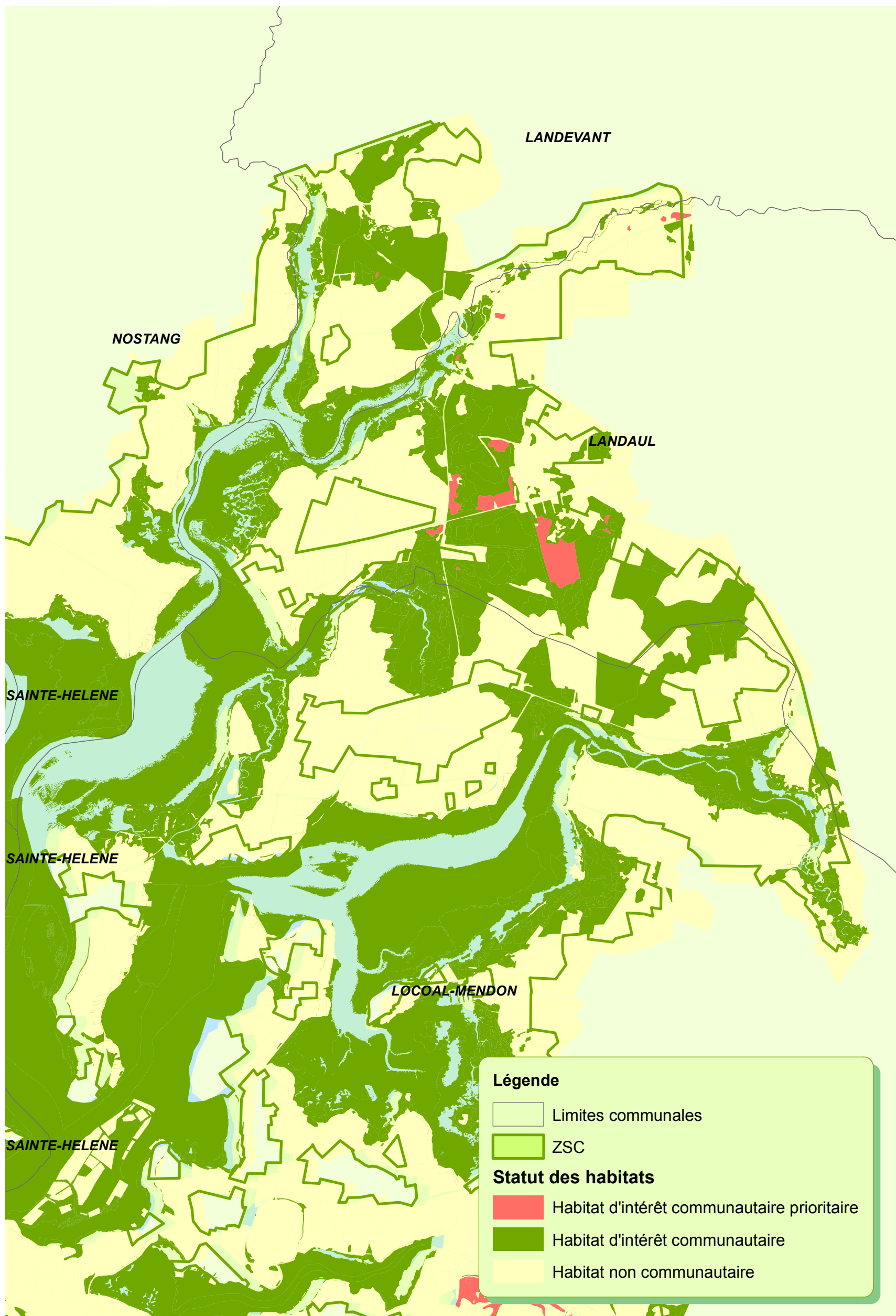
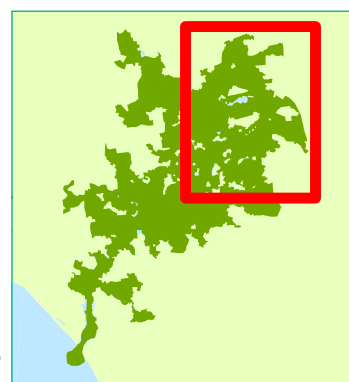
0 1 625 3 250 6 500 Mètres



# ► Statuts des habitats

Nord-est du site N2000

0 850 1 700 3 400 Mètres



Sources : Syndicat Mixte de la Ria d'Etel, DREAL, CBNB

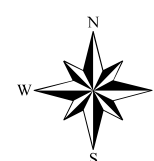
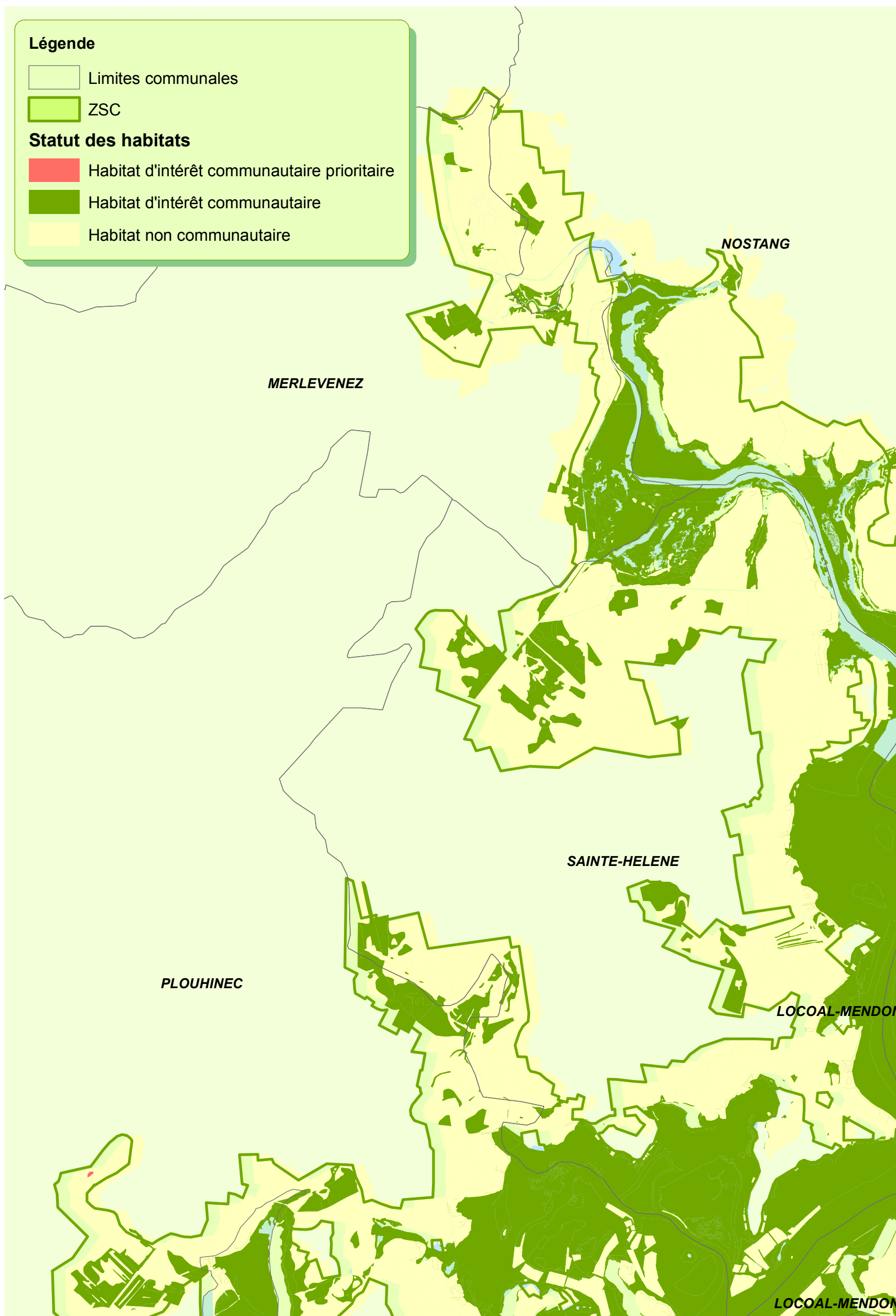
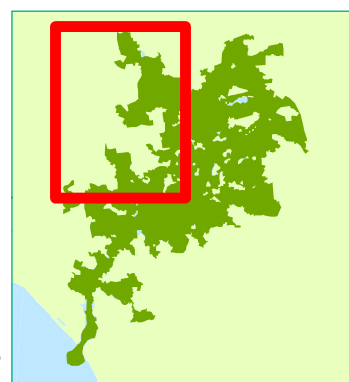
DOCUMENT D'OBJECTIFS NATURA 2000



# ► Statuts des habitats

Nord-ouest du site N2000

0 850 1 700 3 400 Mètres



Sources : Syndicat Mixte de la Ria d'Etel, DREAL, CBNB

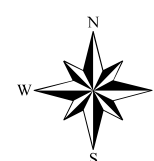
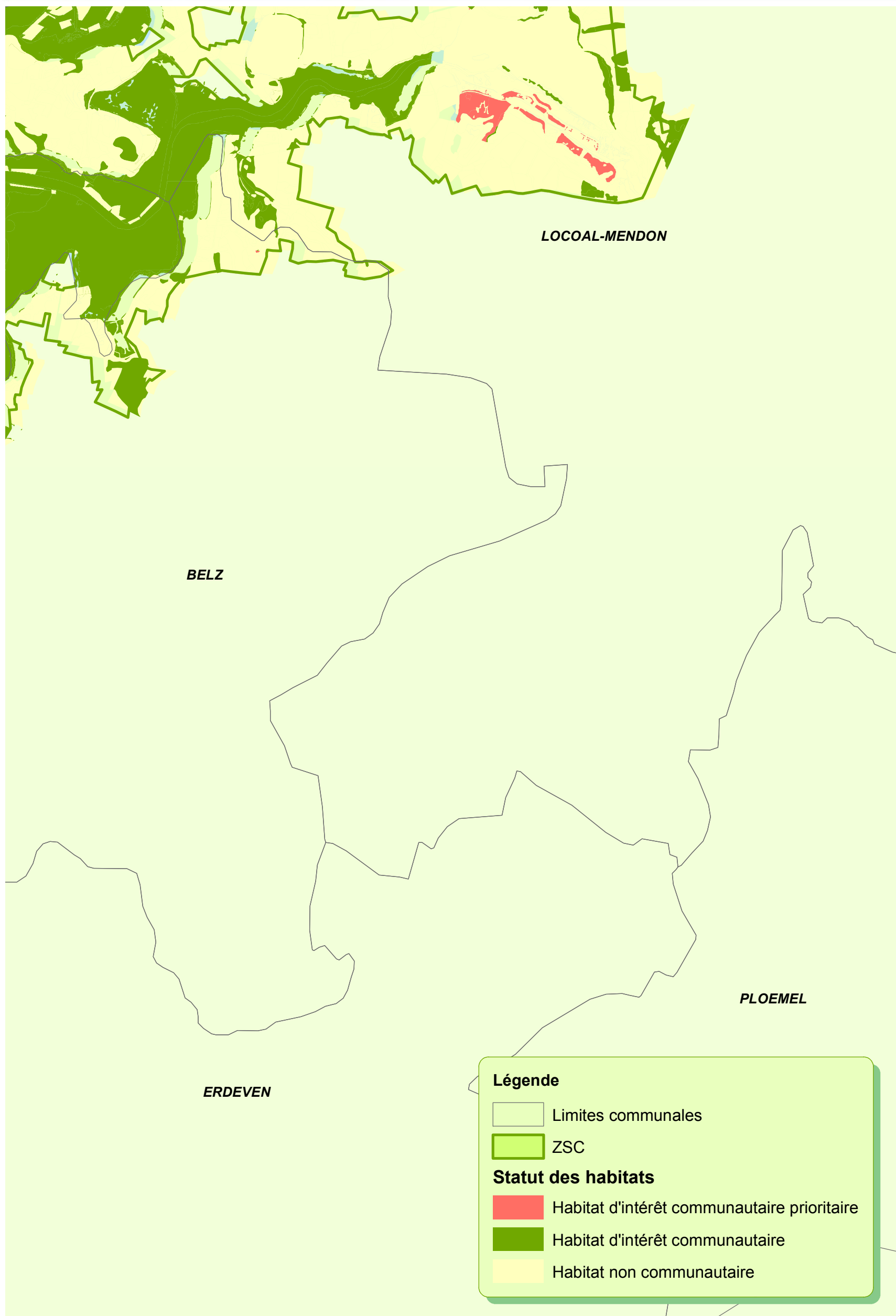
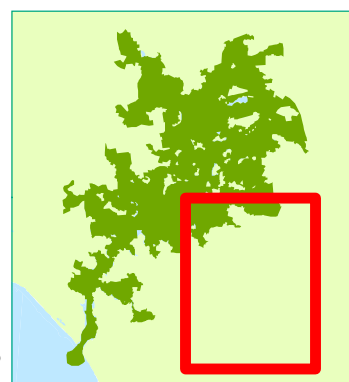
DOCUMENT D'OBJECTIFS NATURA 2000



# ► Statuts des habitats

Sud-est du site N2000

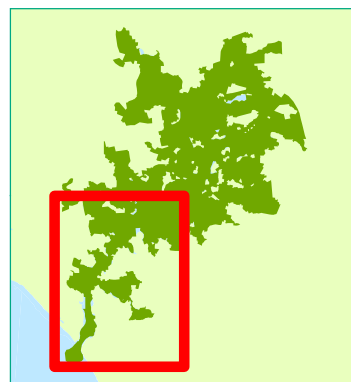
0 850 1 700 3 400 Mètres



# ► Statuts des habitats

Sud-ouest du site N2000

0 850 1 700 3 400 Mètres



## Légende

ZSC

Limites communales

## Statut des habitats

Habitat d'intérêt communautaire prioritaire

Habitat d'intérêt communautaire

Habitat non communautaire

