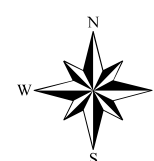
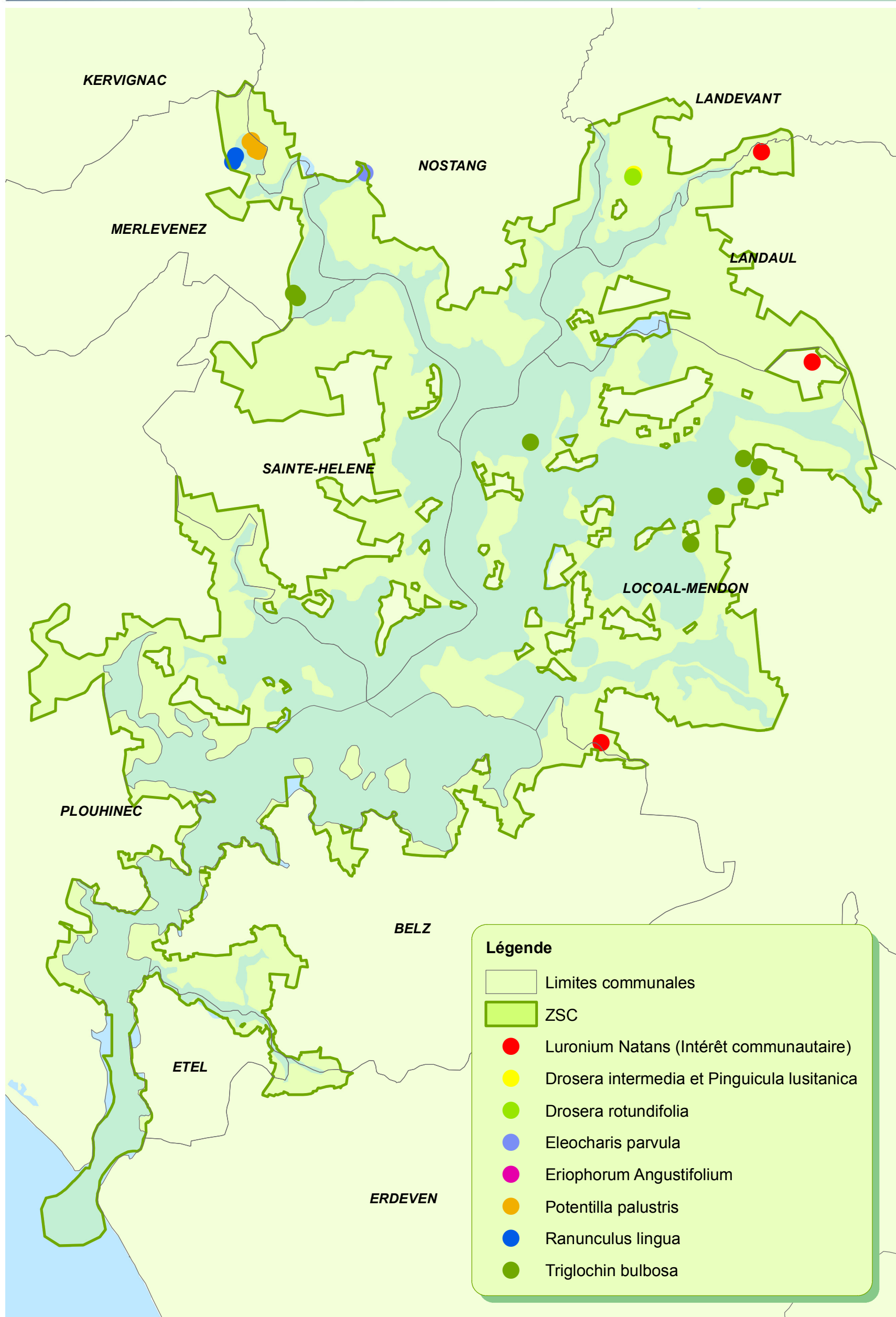
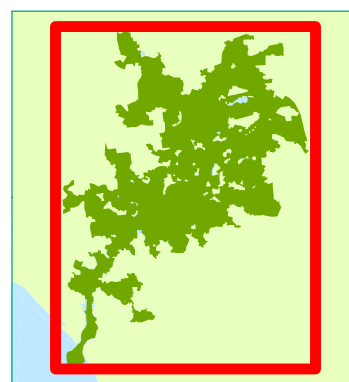


► Espèces végétales

Ensemble du site N2000

0 1 625 3 250 6 500 Mètres

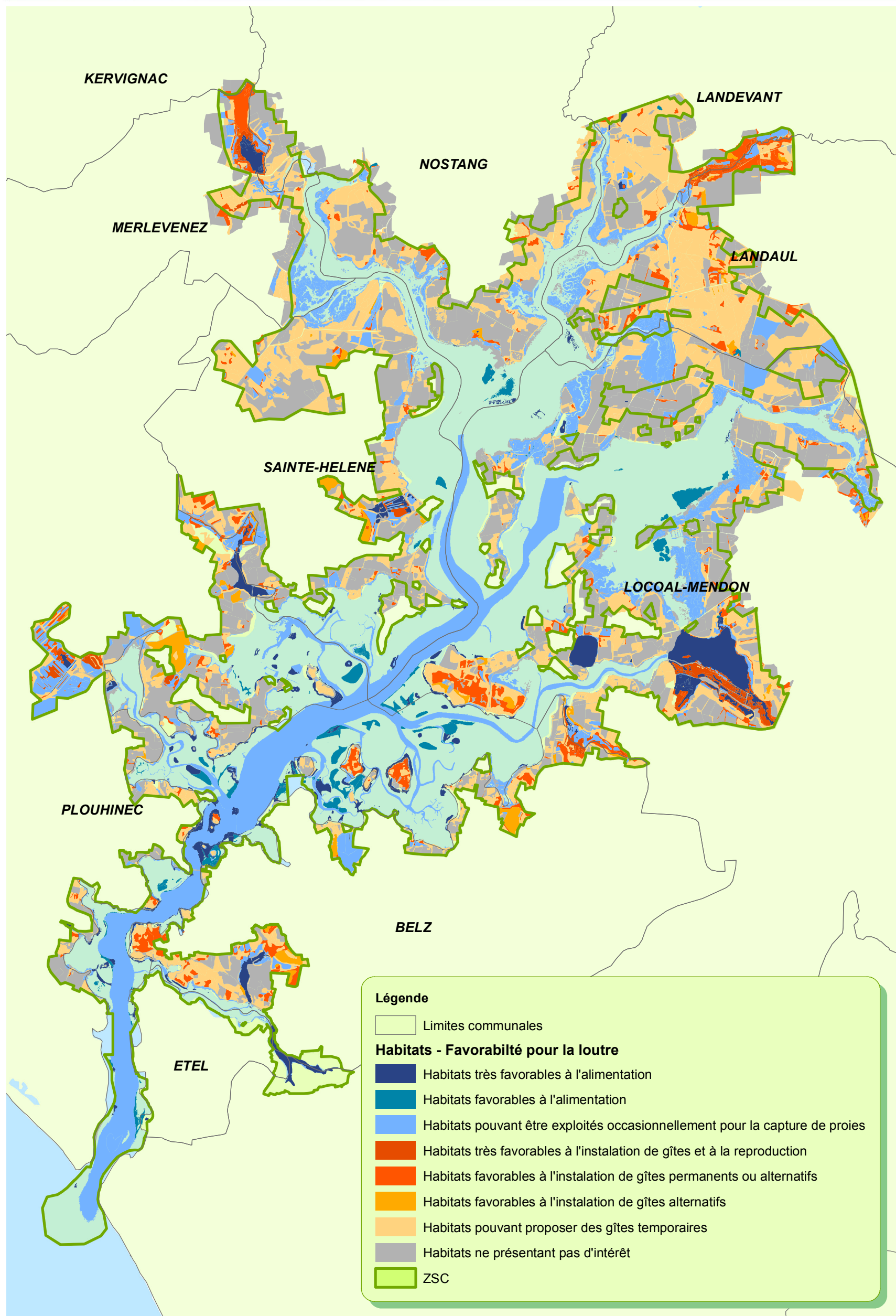
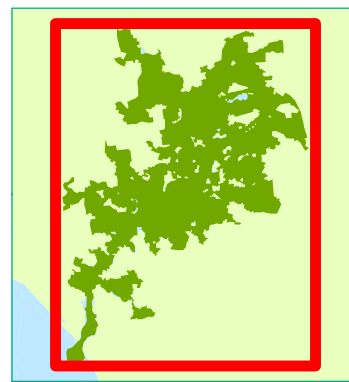


Sources : Syndicat Mixte de la Ria d'Etel, DREAL, CBNB

► Habitats de la Loutre d'Europe

Ensemble du site N2000

0 1 625 3 250 6 500 Mètres

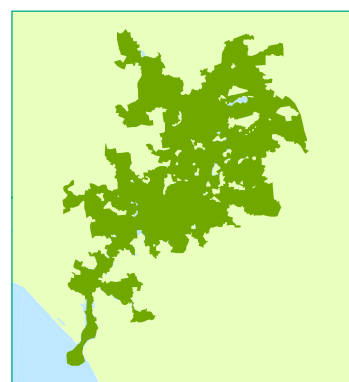


Sources : Syndicat Mixte de la Ria d'Etel, DREAL, GMB

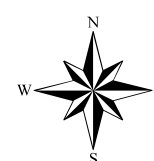
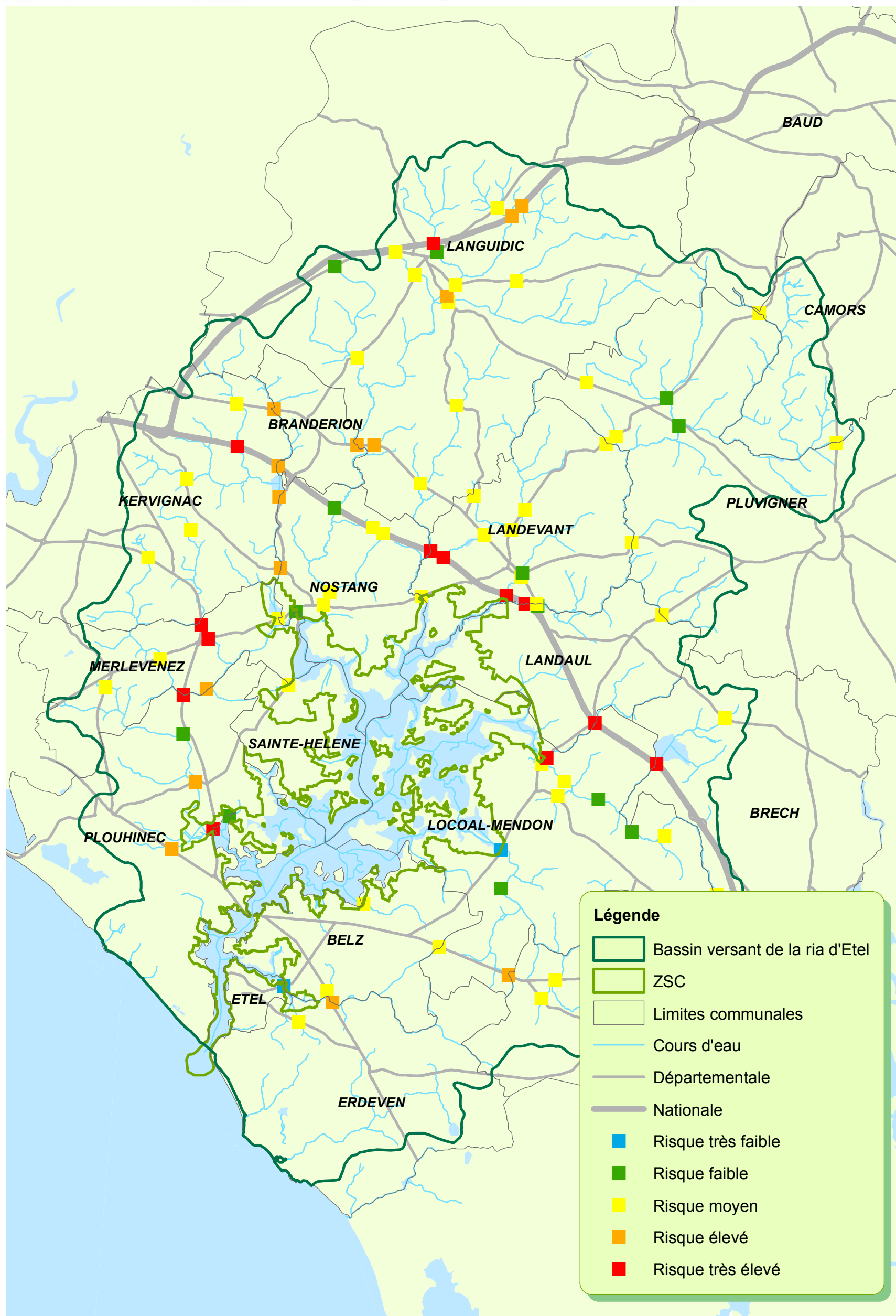
DOCUMENT D'OBJECTIFS NATURA 2000

► Risque de collision pour la Loutre d'Europe

0 3 850 7 700 15 400 Mètres



DOCUMENT D'OBJECTIFS NATURA 2000

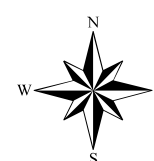
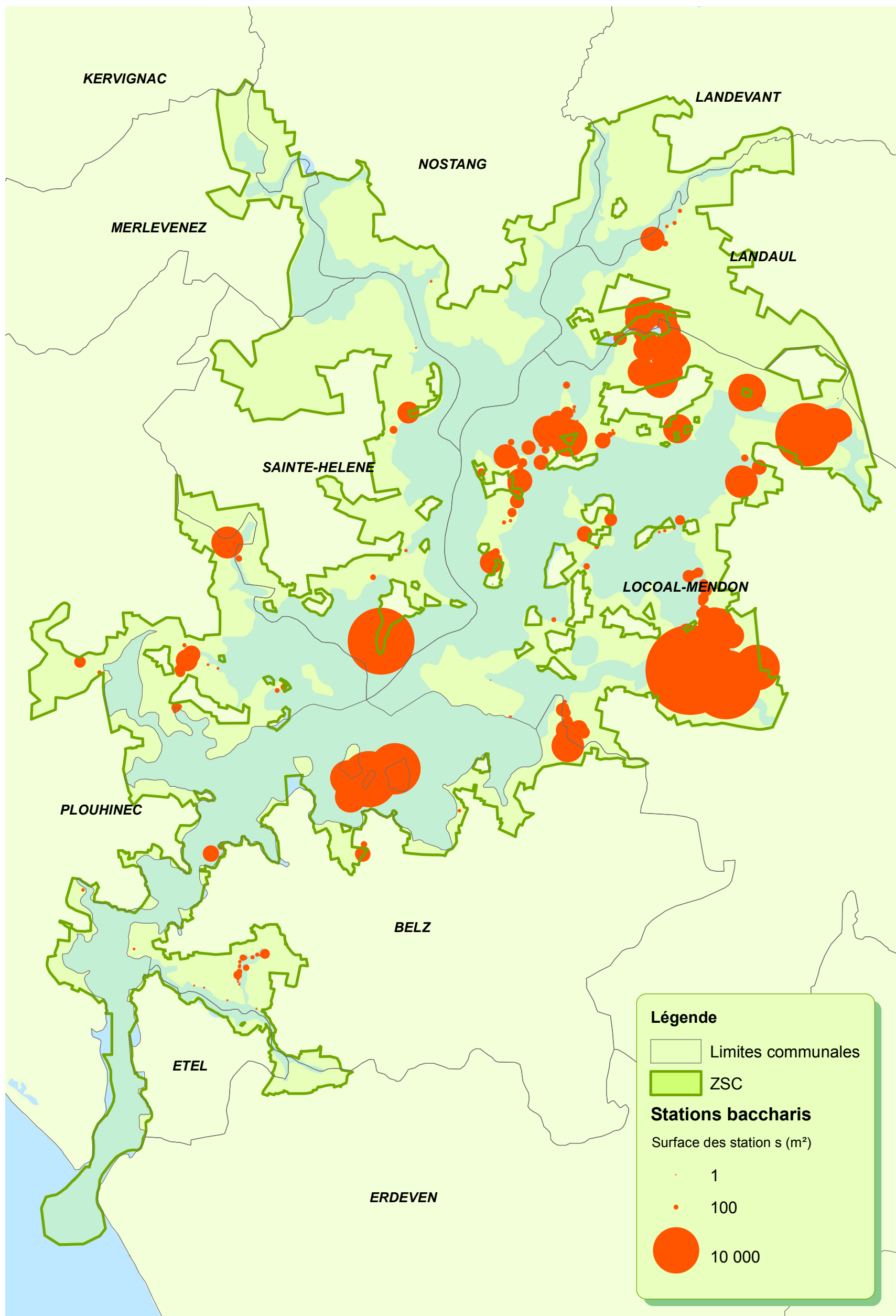
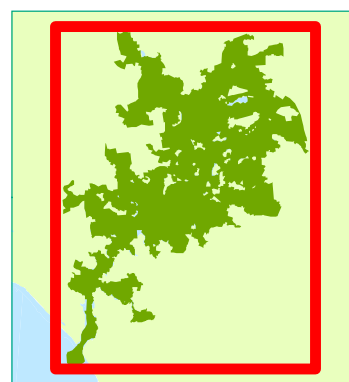


Sources : Syndicat Mixte de la Ria d'Etel, DREAL, CBNB

► **Espèce invasive : le baccharis**

Ensemble du site N2000

0 1 625 3 250 6 500 Mètres



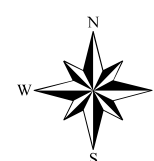
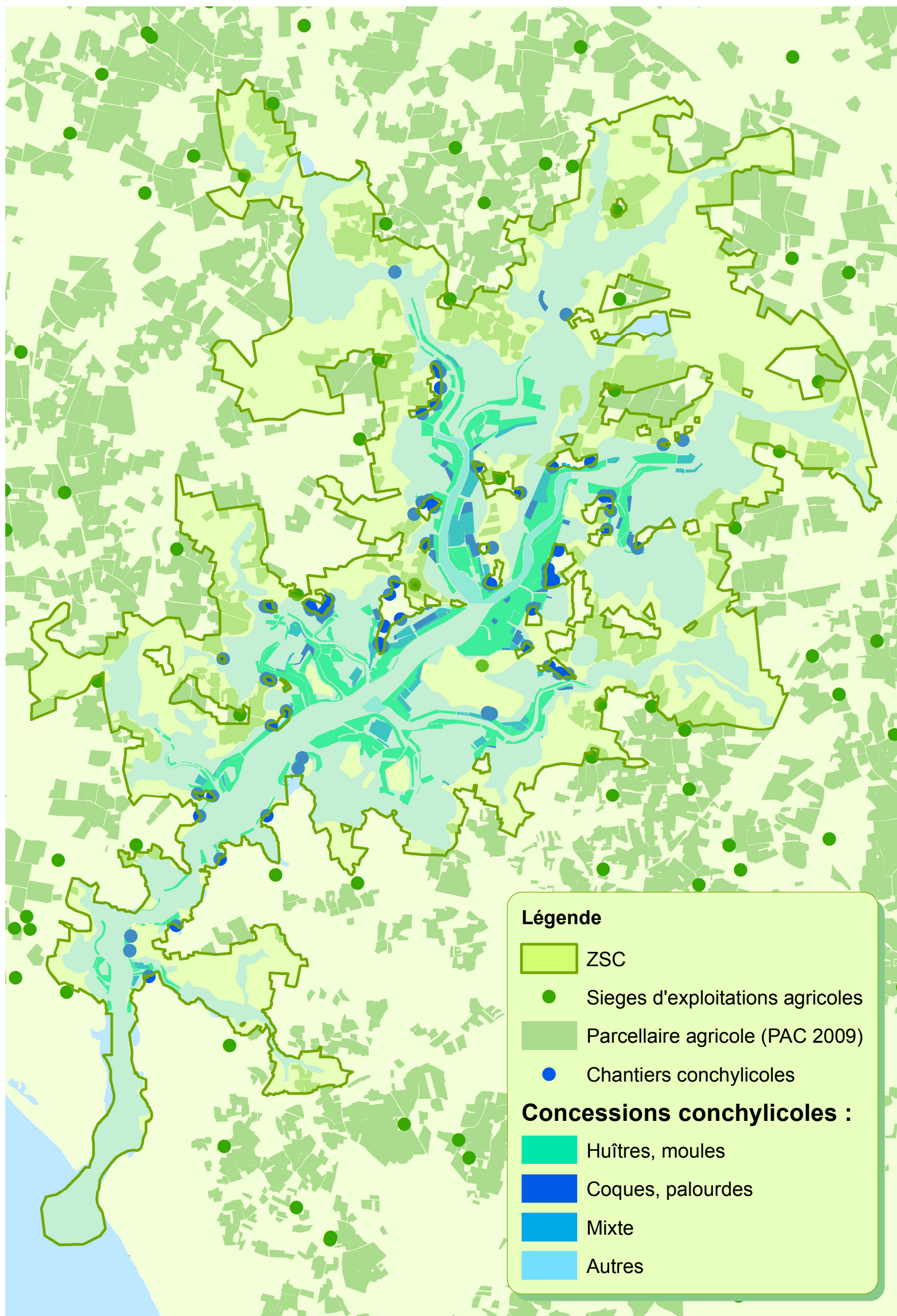
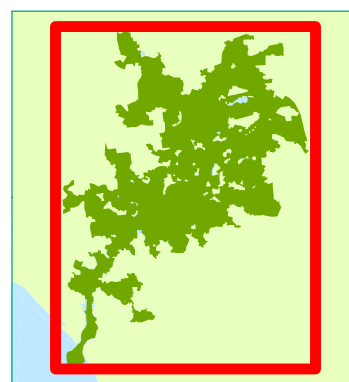
Sources : Syndicat Mixte de la Ria d'Etel, DREAL, CBNB

DOCUMENT D'OBJECTIFS NATURA 2000

► Agriculture et conchyliculture

Ensemble du site N2000

0 1 625 3 250 6 500 Mètres

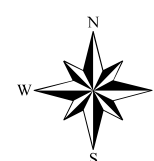
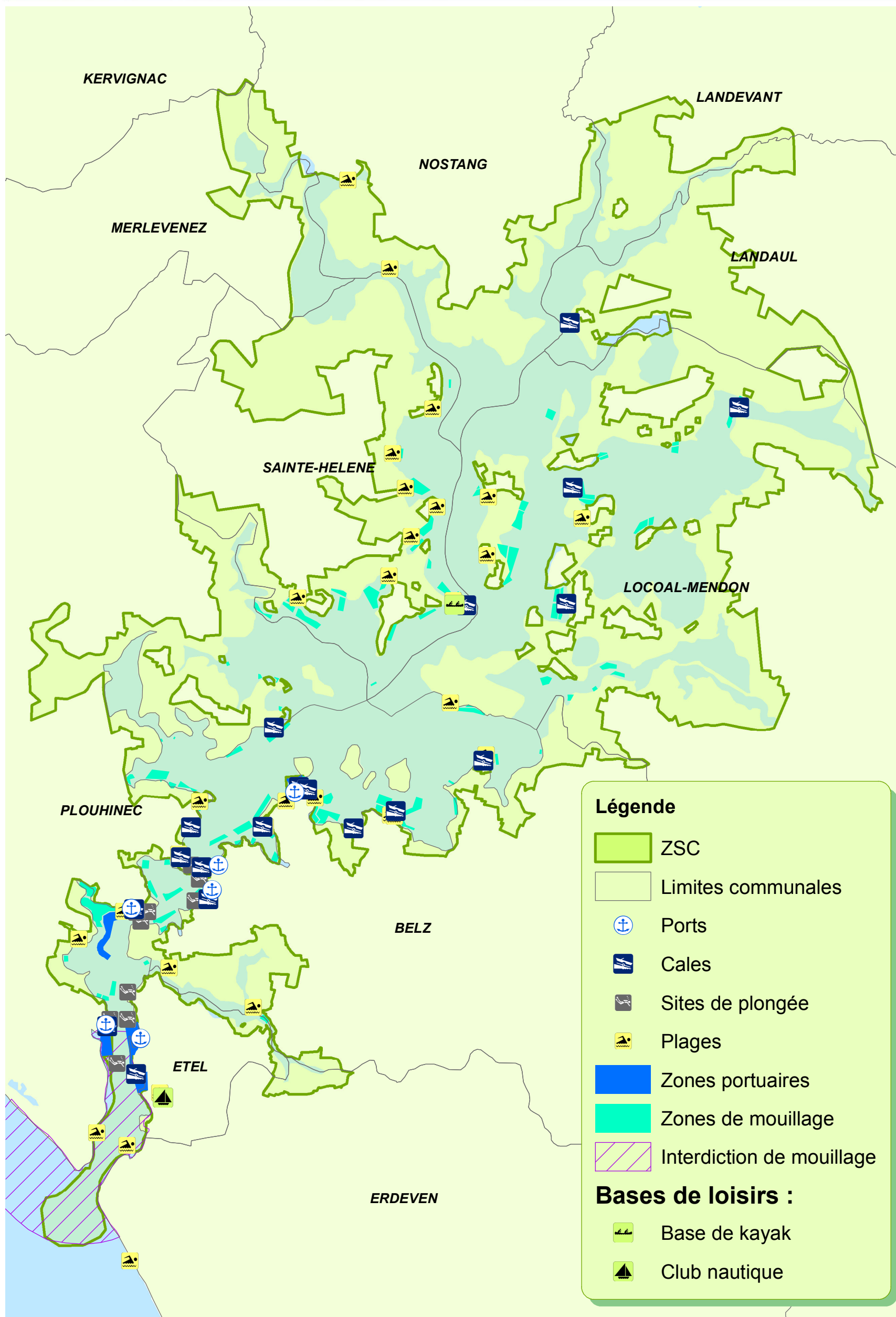
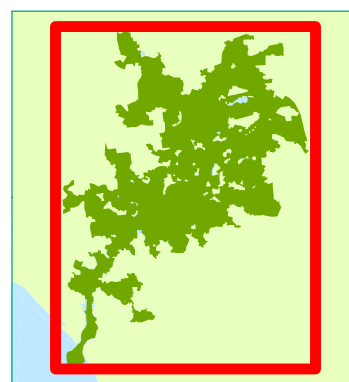


Sources : Syndicat Mixte de la Ria d'Etel, DREAL, ASP, CRC, Chambre d'agriculture

► Activités et loisirs nautiques

Ensemble du site N2000

0 1 625 3 250 6 500 Mètres



Sources : Syndicat Mixte de la Ria d'Etel, DREAL, DDTM, IGN

► Chasse, pêche et démoustication

Ensemble du site N2000

0 1 625 3 250 6 500 Mètres

